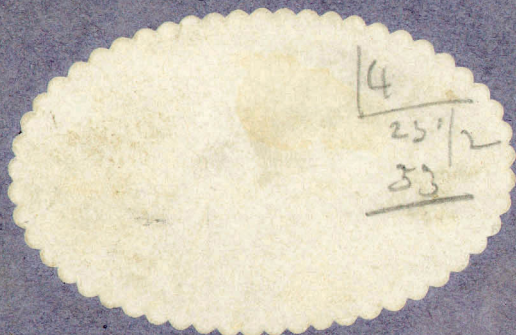


I958-176

22

no 57

mai 1896



4871

4800

300

5100

8

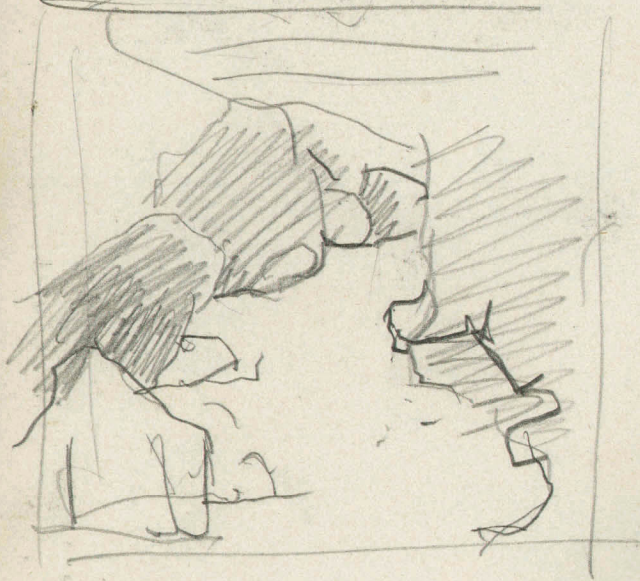
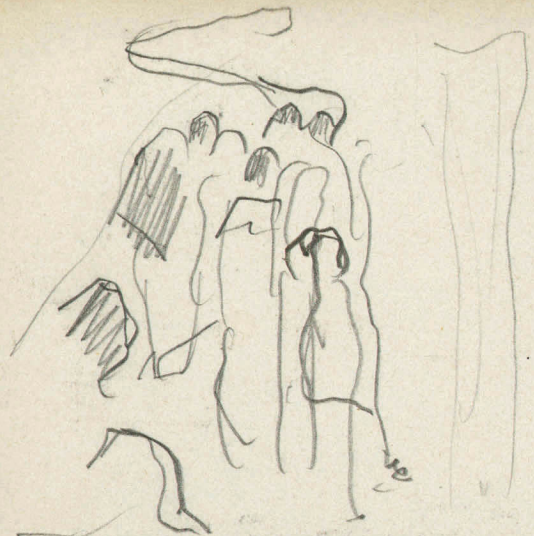
13000



Bohy.

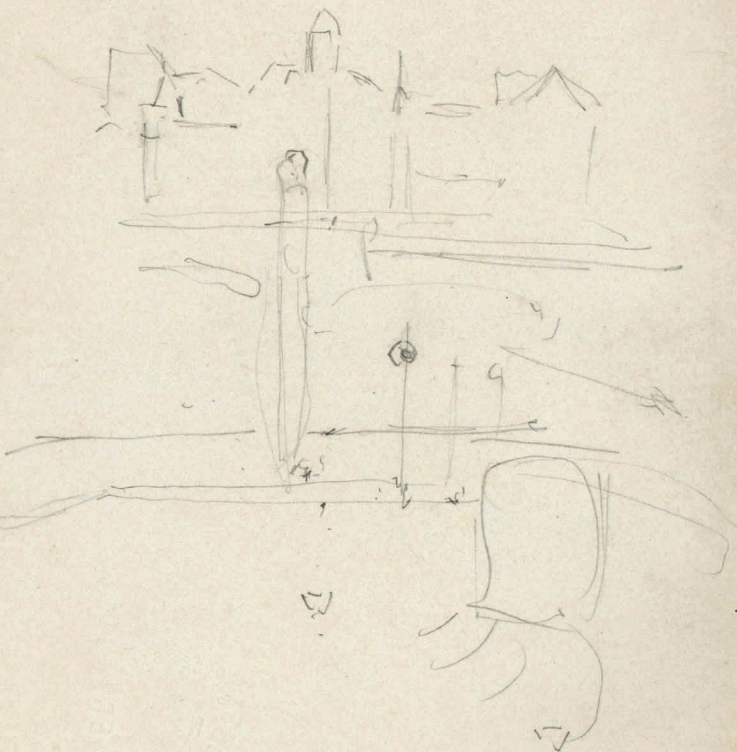


I958-  
I76/22



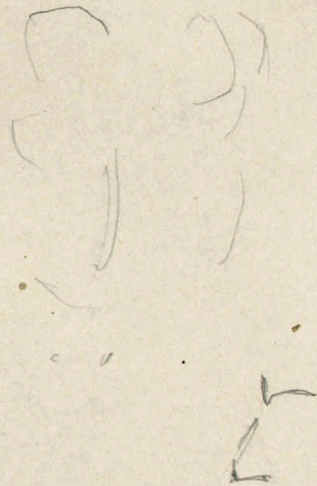
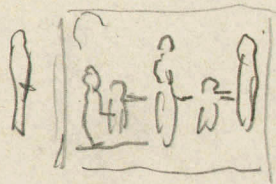
un grand ...

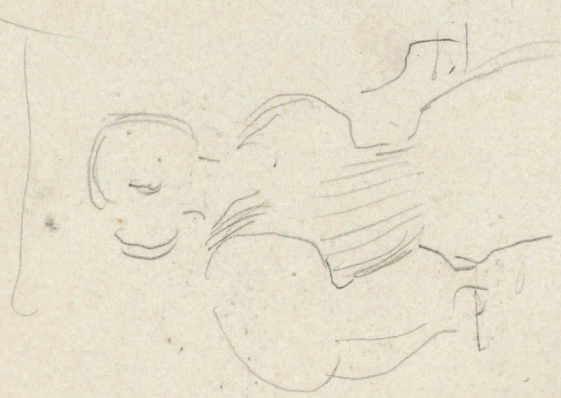




Konrad.

Heldet Pension Sjögren.  
Friedrichstraße



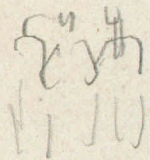


Wanda Butter  
 Darius  
 Pindard  
 Vantien  
 Tameret,  
 Sandrenter  
 Truhle

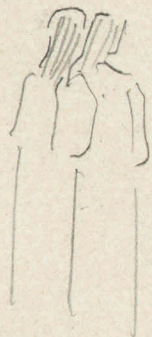
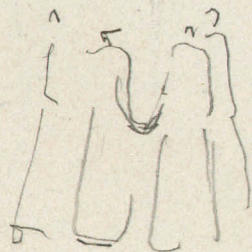


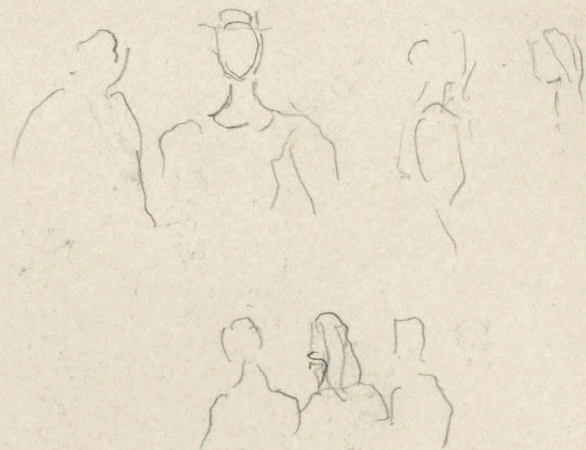
Bovy  
~~Sandrenter~~  
 Roy Lee  
 Kissing





Handwritten text, possibly a name or title, consisting of several characters in a cursive script.







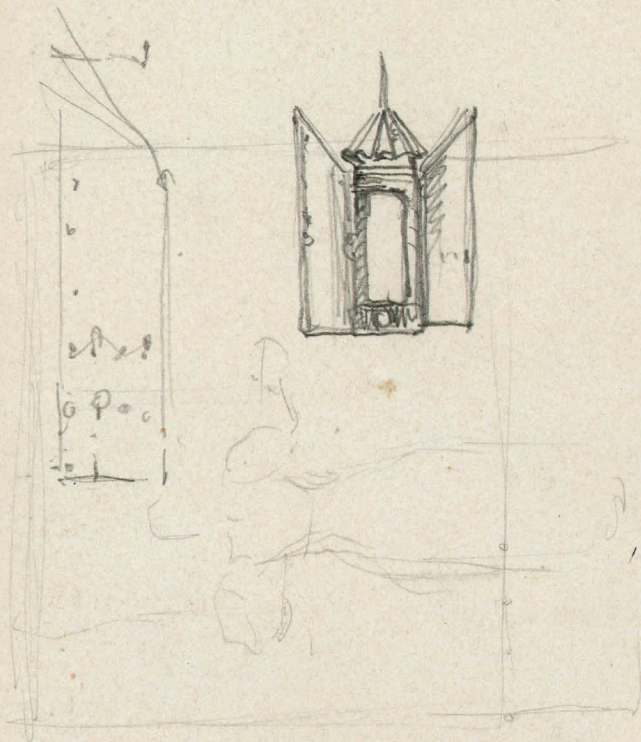


ca Justice sur les mœurs H d'arts



to to to to  
to to to to  
to to to to

2<sup>e</sup> la Cham grande pour Blanche  
generale mardi 28. Mars.



2<sup>e</sup> Hebert Au Topfer



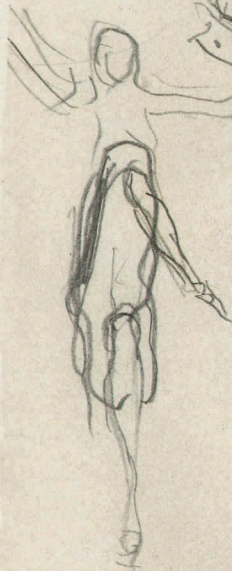
Kaiser  
Blanche.  
Vullerant  
A. K. K.  
St. Helberger

De Marion  
Au de Bassinot  
Robert.



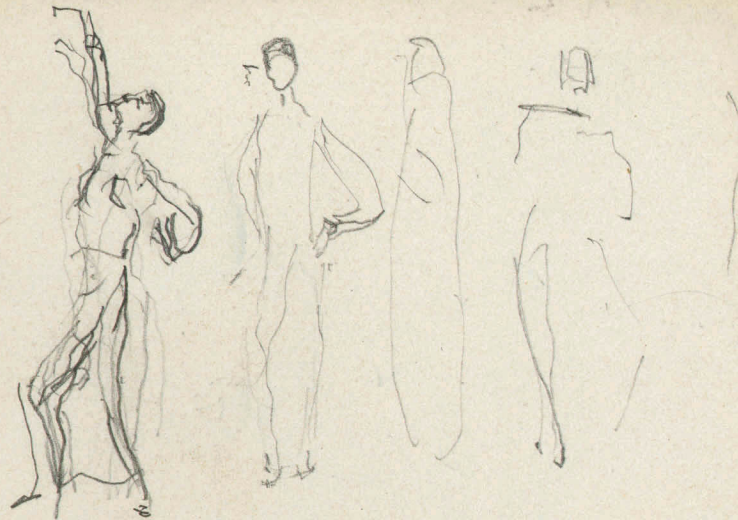
Charles Bonnet

Auguste Bannout

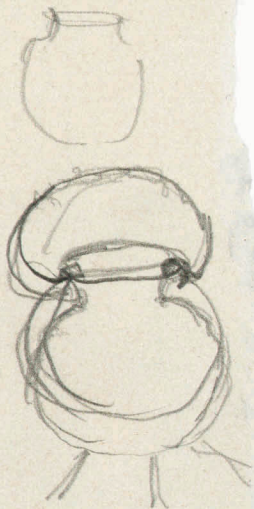
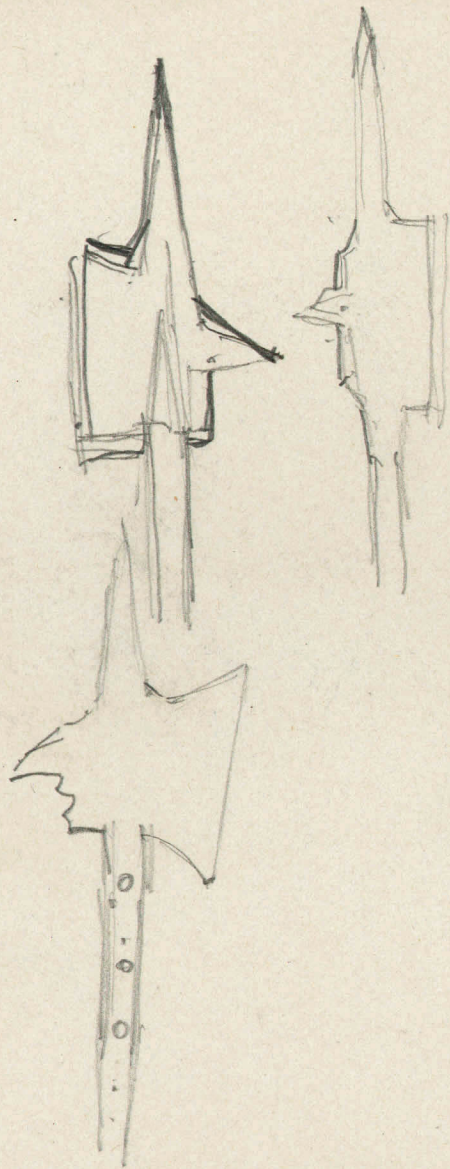


Jerry Espard

3 Aug 1904  
11/10/04



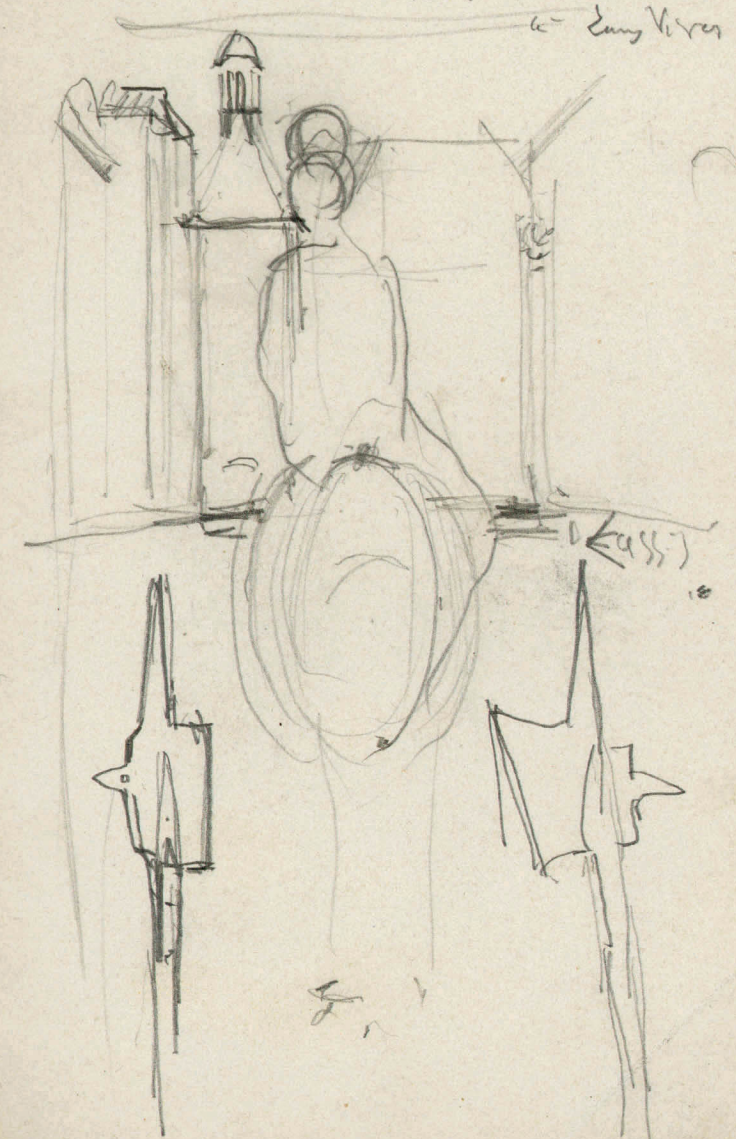
22

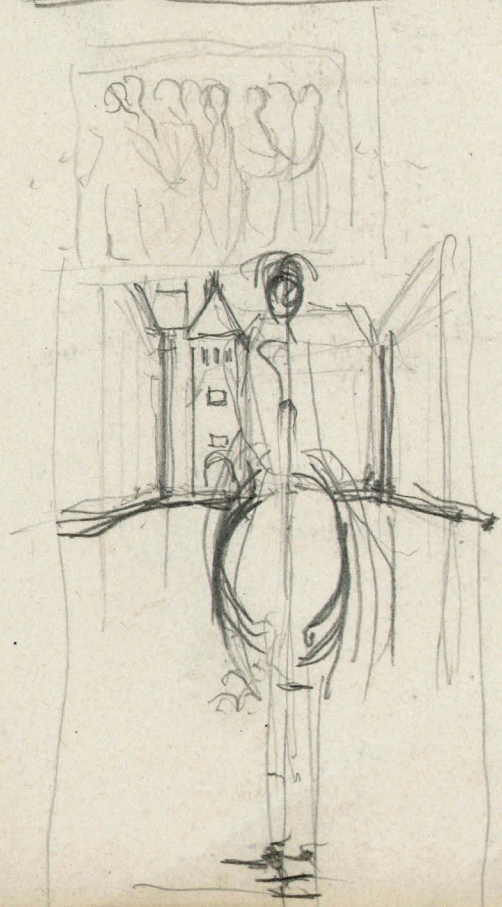


50 ft  
 2-  
 2-  
 kb-  
 40  
 90  
 450  
 350  
 4850

350  
 7  
 2450-  
 3  
 8  
 20

Tafel -  
 chemin - Nant 2  
 a - Lang Vires







Wann der Saft von  
L. oder Anemone  
herkommt

1. Tottl. in Wasser  
Herbstzeit

Wann man Saft  
nimmt

und es ist nur so gut  
in Mischungen

comme d'Éthyle, dont le maniement  
est des plus simples se trouve dans  
chaque pharmacie. contre toute  
sorte de pierre

simple pulvérisation. après avoir  
attaché et cuit en plaque

Säze für Grosse für Saft  
(10 bis 15 Gramm Saft)

Chabarrata an

Village Suisse

Mamequin

en a. Schuman

Welt der bis 1/2 Gramm

Commiss à Bano - Histoire de Bern,  
Bâle.



1200  
Cristen 4500  
Papier 3000

$$\begin{array}{r} 243 \\ 166 \\ \hline 770 \end{array}$$

$$\begin{array}{r} 166 \\ 150 \\ \hline 129 \end{array}$$

$$\begin{array}{r} 77 \\ 2 \\ \hline 79 \end{array}$$

~~Die Furchen für ...~~  
~~Flächen ...~~  
~~mit ...~~  
~~...~~  
~~...~~  
~~...~~  
~~...~~

Der Fall auf ...  
 ...  
 ...  
 ...  
 ...

Dimension de. Chrythrice 2.43 —  
1.66

Dim. de laquisse (de l'Fr.) — 47-36.

1 Pontefiale 2  
 (Cherlay 15  
 2 pontefiale 6  
 Toile 150  
 2. Chesi  
 a Bote — 50 fance  
 10 jour de ...  
 30 ...

5 Juillet 70  
 20  
 40  
 10  


---

 240  
 77 Juillet 80.  


---

 255  
 30  
 70  
 110  
 120  


---

 475

vaseline boique

Habit

de quelle maniere garcon l'on jure au

une

aller la montagne pour construction  
vers de Tenne

dop. ni la sonde. manite

M Barales

Mingos pour cadre  
beni V. g. ar.

le Temp Samedi 2. Mai 1856.

achter petite plume, etc  
aller a la poste

Papier calque.

Felice Obiedo  
Sugano  
W. H. H. H. H.